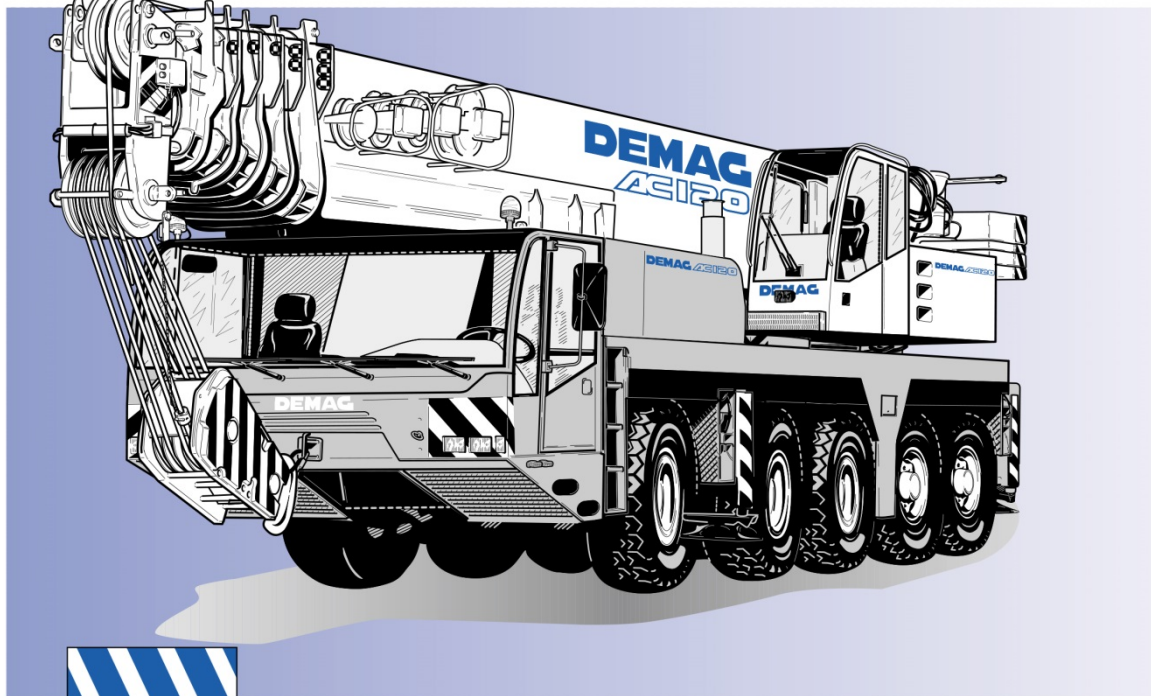


- Dimensions
- Specifications
- Working ranges main boom
- Lifting capacities main boom
- Notes to lifting capacity
- Working ranges main boom extension
- Lifting capacities main boom extension



## Demag AC 120

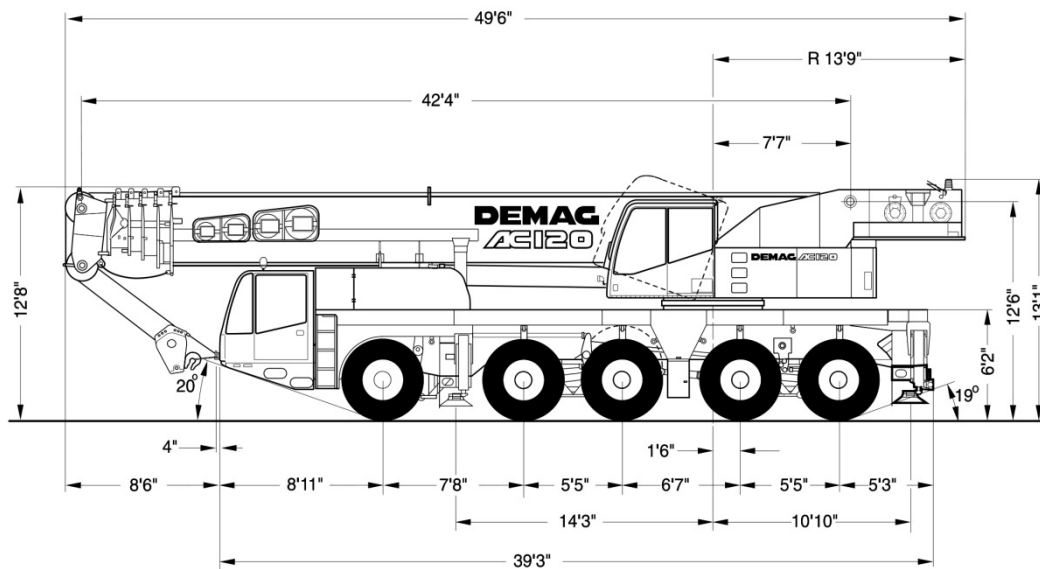


**165t**

*Mobile cranes in perfection*

[MAIN MENU](#)

## Dimensions

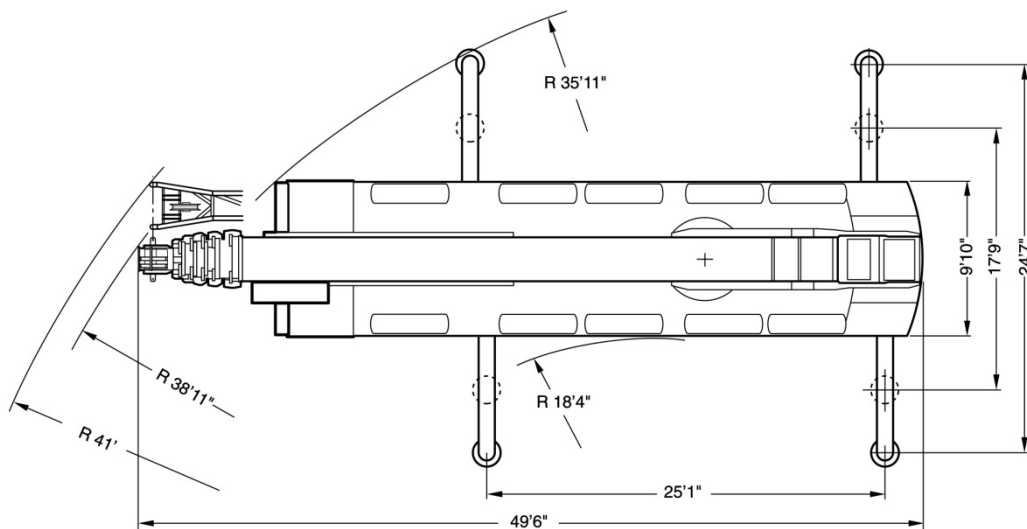
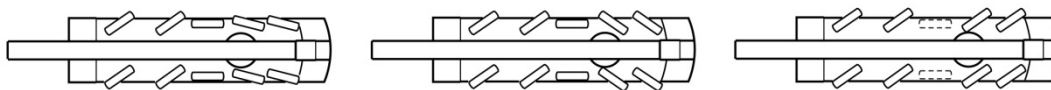


[MAIN MENU](#)

[CONTENTS](#)

## Dimensions

---



[MAIN MENU](#)

[CONTENTS](#)

## Specifications

### Axle loads

Basic machine with hook block type 32, 12,300 lb counterweight, tires 14.00 R 25	
Axles	5 x 26,460 lb
Total	132,300 lb

### Working speeds (infinitely variable)

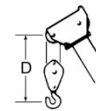
Mechanisms	Normal speed	High speed	Max. permissible line pull <sup>1)</sup>	Length of hoist rope
Hoist I	197 ft/min	361 ft/min	16,000 lb	787 ft
Hoist II	197 ft/min	361 ft/min	16,000 lb	787 ft
Slewing				max. 2 rpm
Telescoping speed	42-197 ft: 190 s			
Boom elevation	-1.5° - +80.5°: 55 s			

### Carrier performance

Travel speed	
Forward	0 to 46/50 mph <sup>3)</sup>
Reverse	0 to 4 mph
Gradeability in travel order	max. 60 %
Ground clearance	13 inches

### Hook block/Single line hook

Type	Possible load <sup>2)</sup>	Number of sheaves	Number of lines	Weight	„D“
125*)	132 t	9	18	2867 lb	6.6 ft
80	87 t	5	11	2051 lb	6.2 ft
63	55 t	3	7	1543 lb	6.2 ft
32	23 t	1	3	1213 lb	5.9 ft
8	8 t	Single line hook		551 lb	5.6 ft



\*) heavy-lift attachment is required, without heavy-lift attachment: capacity 86.4 tons (12 lines)

1) varies depending on national regulations

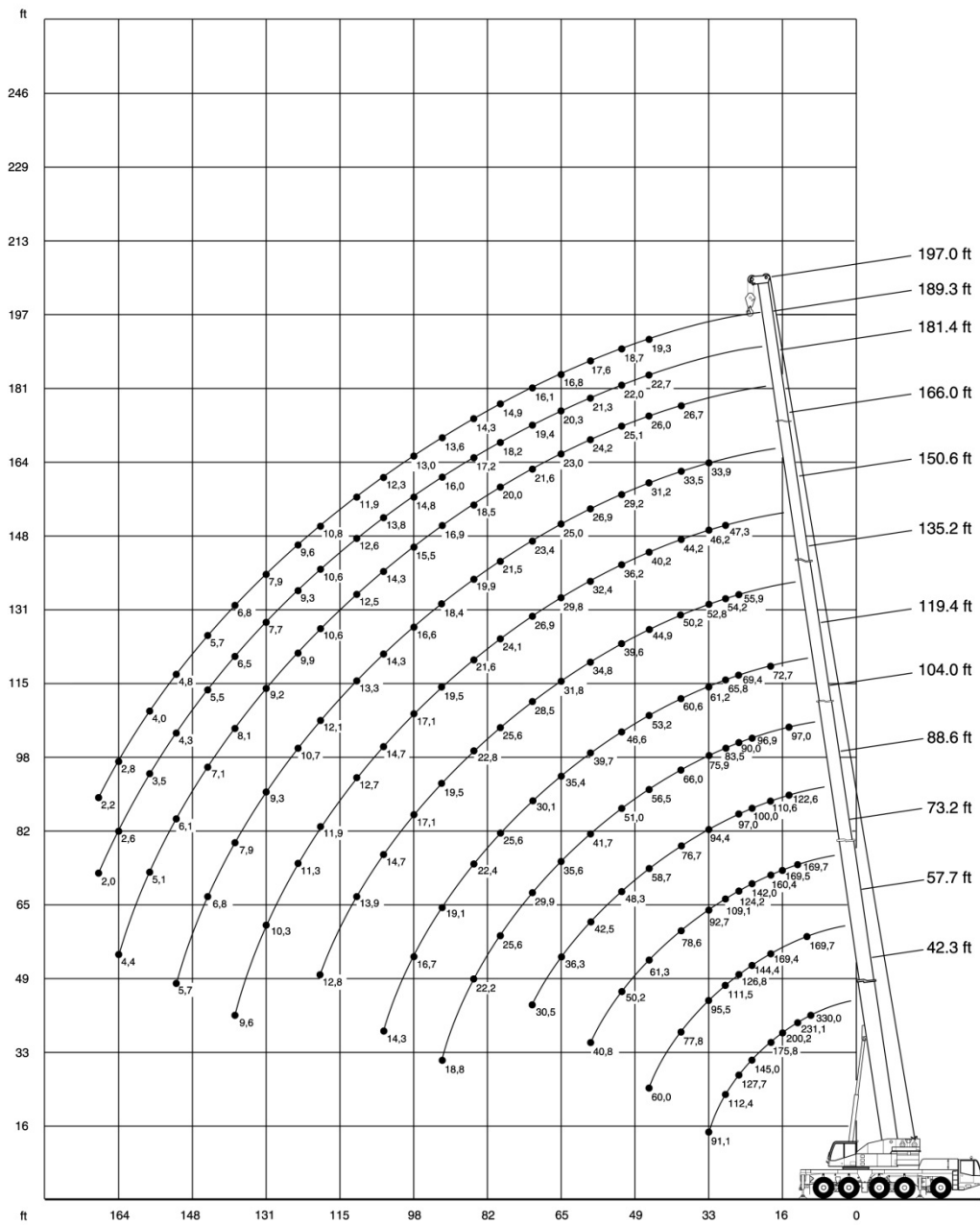
2) varies depending on line pull permissible under different national regulations

3) depending on tires

[MAIN MENU](#)

[CONTENTS](#)

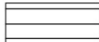

## Working range main boom



[MAIN MENU](#)

[CONTENTS](#)

## Lifting capacities main boom in 1,000 lb

**83,800 lb**   **25'1" x 24'7"** **360°** **85%**

		Length of main boom (ft)																									
Radius (ft)		42.3	57.7	73.2	73.2	88.6	88.6	88.6	104.0	104.3	119.1	119.4	119.4	135.2	135.2	135.2	150.6	150.6	150.6	166.0	166.0	181.4	181.8	189.3	197.0		
		1,000 lb																									
ft																											
10	330.0*	-	-	-	-	-	-	-	-	-	-	-	-	-	-	-	-	-	-	-	-	-	-	-	-	-	
10	300.0*	-	-	-	-	-	-	-	-	-	-	-	-	-	-	-	-	-	-	-	-	-	-	-	-	-	
10	268.8	-	-	-	-	-	-	-	-	-	-	-	-	-	-	-	-	-	-	-	-	-	-	-	-	-	
11	255.5	169.7	-	-	-	-	-	-	-	-	-	-	-	-	-	-	-	-	-	-	-	-	-	-	-	-	
13	231.1	169.7	97.0	169.7	-	-	-	-	-	-	-	-	-	-	-	-	-	-	-	-	-	-	-	-	-	-	
15	209.6	169.7	97.0	169.7	60.6	97.0	122.6	-	-	-	-	-	-	-	-	-	-	-	-	-	-	-	-	-	-	-	
16	200.2	169.7	97.0	169.5	60.6	97.0	118.1	60.6	97.0	-	-	-	-	-	-	-	-	-	-	-	-	-	-	-	-	-	
19	175.8	169.4	97.0	160.4	60.6	97.0	110.6	60.6	97.0	72.7	60.9	60.6	-	-	-	-	-	-	-	-	-	-	-	-	-	-	
23	145.0	144.4	97.0	142.0	60.6	97.0	100.0	60.6	96.9	72.7	58.8	60.6	-	-	-	-	-	-	-	-	-	-	-	-	-	-	
26	127.7	126.8	97.0	124.2	60.6	97.0	92.7	60.6	90.0	69.4	56.8	60.6	36.3	53.3	55.9	-	-	-	-	-	-	-	-	-	-	-	
29	112.4	111.5	97.0	109.1	60.6	97.0	86.0	60.6	83.5	65.8	54.6	60.6	36.3	50.5	54.2	32.5	43.0	47.3	-	-	-	-	-	-	-	-	
33	91.1	95.5	91.9	92.7	60.5	94.4	77.7	60.5	75.9	61.2	51.9	60.6	35.4	46.8	52.8	31.4	41.1	46.2	31.0	33.9	-	-	-	-	-	-	
39	-	77.8	78.6	75.3	57.5	76.7	67.0	58.7	66.0	54.6	48.7	60.6	32.5	42.3	50.2	28.8	37.6	44.2	28.3	33.5	21.6	26.7	-	-	-	-	
46	-	60.0	61.3	57.1	52.4	58.7	56.0	54.8	56.5	47.5	45.3	53.2	29.2	38.1	44.9	25.9	34.3	40.2	25.7	31.2	20.7	26.0	22.7	19.3	-	-	
52	-	-	50.2	46.3	48.3	47.8	45.4	51.0	47.2	41.7	42.3	46.6	26.6	35.0	39.6	23.9	31.7	36.2	23.9	29.2	19.7	25.1	22.0	18.7	-	-	
59	-	-	40.8	36.8	42.5	38.4	36.0	41.7	37.9	35.9	38.8	39.7	24.0	31.9	34.8	21.8	28.9	32.4	22.0	26.9	18.5	24.2	21.3	17.6	-	-	
65	-	-	-	-	36.3	32.3	29.9	35.6	31.9	31.5	35.4	33.8	22.2	29.7	31.8	20.2	26.8	29.8	20.8	25.0	17.3	23.0	20.3	16.8	-	-	
72	-	-	-	-	30.5	26.6	24.1	29.9	26.1	25.9	30.1	28.1	20.3	27.6	28.5	18.7	24.7	26.9	19.4	23.4	16.3	21.6	19.4	16.1	-	-	
79	-	-	-	-	-	-	-	25.6	21.4	21.2	25.6	23.4	18.9	25.6	23.8	17.3	22.8	24.1	18.2	21.5	14.9	20.0	18.2	14.9	-	-	
85	-	-	-	-	-	-	-	22.2	18.0	17.8	22.4	20.0	17.6	22.8	20.4	16.3	21.6	21.5	17.2	19.9	14.1	18.5	17.2	14.3	-	-	
92	-	-	-	-	-	-	-	18.8	14.9	14.5	19.1	16.7	16.5	19.5	17.1	15.1	19.5	18.2	16.0	18.4	13.2	16.9	16.0	13.6	-	-	
98	-	-	-	-	-	-	-	-	12.2	16.7	14.2	15.5	17.1	14.9	14.3	17.1	15.6	15.2	16.6	12.6	15.5	14.8	13.0	-	-	-	
105	-	-	-	-	-	-	-	-	9.9	14.3	11.9	14.5	14.7	12.3	13.6	14.7	13.2	14.3	14.1	12.1	14.3	13.8	12.3	-	-	-	
111	-	-	-	-	-	-	-	-	-	-	-	-	-	13.9	12.9	10.5	12.6	12.7	11.6	13.3	12.2	11.5	12.5	12.6	11.9	-	-
118	-	-	-	-	-	-	-	-	-	-	-	-	-	12.8	11.2	8.8	11.9	10.8	9.7	12.1	10.3	10.5	10.6	10.6	10.8	-	-
124	-	-	-	-	-	-	-	-	-	-	-	-	-	-	-	11.3	9.6	8.1	10.7	9.1	9.9	9.1	9.3	9.6	-	-	
131	-	-	-	-	-	-	-	-	-	-	-	-	-	-	-	10.3	8.2	6.8	9.3	7.5	9.2	7.7	7.7	7.9	-	-	
138	-	-	-	-	-	-	-	-	-	-	-	-	-	-	-	9.6	7.0	5.4	7.9	6.3	8.1	6.5	6.5	6.8	-	-	
144	-	-	-	-	-	-	-	-	-	-	-	-	-	-	-	-	6.8	5.1	7.1	5.3	5.5	5.5	5.7	-	-	-	
151	-	-	-	-	-	-	-	-	-	-	-	-	-	-	-	-	5.7	4.1	6.1	4.3	4.3	4.3	4.8	-	-	-	
157	-	-	-	-	-	-	-	-	-	-	-	-	-	-	-	-	-	-	-	-	5.1	3.3	3.5	4.0	-	-	-
164	-	-	-	-	-	-	-	-	-	-	-	-	-	-	-	-	-	-	-	-	4.4	2.6	2.6	2.8	-	-	-
170	-	-	-	-	-	-	-	-	-	-	-	-	-	-	-	-	-	-	-	-	-	-	2.0	2.2	-	-	-

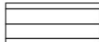

Boom extension sequence %

Tele 1	0	0	0	50	30	50	75	40	67	83	50	70	30	60	80	20	70	85	65	90	50	95	100	100
Tele 2	0	50	50	50	30	50	75	40	67	83	50	70	30	60	80	60	70	85	65	90	100	95	100	100
Tele 3	0	0	50	0	30	50	0	60	67	83	70	70	80	60	70	90	70	90	70	100	95	92	100	100
Tele 4	0	0	0	0	30	0	0	30	0	0	40	20	80	60	35	90	70	55	90	75	100	83	92	100
Tele 5	0	0	0	0	30	0	0	30	0	0	40	20	80	60	35	90	70	55	90	75	100	83	92	100

\*) over rear

[MAIN MENU](#) [CONTENTS](#)

## Lifting capacities main boom in 1,000 lb

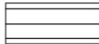
61,700 lb   25'1" x 24'7" 360° 85%

		Length of main boom (ft)																							
Radius (ft)	42.3	57.7	73.2	73.2	88.6	88.6	88.6	104.0	104.3	119.1	119.4	119.4	135.2	135.2	135.2	150.6	150.6	150.6	166.0	166.0	181.4	181.8	189.3	197.0	
ft	1,000 lb																								
10	300.0*	-	-	-	-	-	-	-	-	-	-	-	-	-	-	-	-	-	-	-	-	-	-	-	-
10	267.8	-	-	-	-	-	-	-	-	-	-	-	-	-	-	-	-	-	-	-	-	-	-	-	-
11	253.7	169.7	-	-	-	-	-	-	-	-	-	-	-	-	-	-	-	-	-	-	-	-	-	-	-
13	227.9	169.7	97.0	169.7	-	-	-	-	-	-	-	-	-	-	-	-	-	-	-	-	-	-	-	-	-
15	206.8	169.7	97.0	169.7	60.6	97.0	122.6	-	-	-	-	-	-	-	-	-	-	-	-	-	-	-	-	-	-
16	197.7	169.7	97.0	169.5	60.6	97.0	118.1	60.6	97.0	-	-	-	-	-	-	-	-	-	-	-	-	-	-	-	-
19	168.5	162.7	97.0	160.4	60.6	97.0	110.6	60.6	97.0	72.7	60.9	60.6	-	-	-	-	-	-	-	-	-	-	-	-	-
23	136.9	135.8	97.0	133.1	60.6	97.0	100.0	60.6	96.9	72.7	58.8	60.6	-	-	-	-	-	-	-	-	-	-	-	-	-
26	118.3	117.6	97.0	115.0	60.6	97.0	92.7	60.6	90.0	69.4	56.8	60.6	36.3	53.3	55.9	-	-	-	-	-	-	-	-	-	-
29	104.0	103.2	97.0	100.7	60.6	97.0	86.0	60.6	83.5	65.8	54.6	60.6	36.3	50.5	54.2	32.5	43.0	47.3	-	-	-	-	-	-	-
33	87.1	85.9	87.5	82.4	60.5	84.6	77.4	60.5	75.8	61.2	51.9	60.6	35.4	46.8	52.8	31.4	41.1	46.2	31.0	33.9	-	-	-	-	-
39	-	64.3	65.9	61.2	57.5	63.2	59.9	58.7	62.1	54.6	48.7	60.6	32.5	42.3	50.2	28.8	37.6	44.2	28.3	33.5	21.6	26.7	-	-	-
46	-	48.3	49.7	45.3	51.2	46.8	44.2	50.8	46.4	46.1	45.3	48.6	29.2	38.1	44.9	25.9	34.3	40.2	25.7	31.2	20.7	26.0	22.7	19.3	-
52	-	-	40.2	36.2	41.9	37.7	35.3	41.5	37.3	37.1	41.3	39.3	26.6	35.0	39.6	23.9	31.7	36.2	23.9	29.2	19.7	25.1	22.0	18.7	-
59	-	-	-	32.2	28.2	33.7	29.6	27.1	33.3	29.3	29.1	33.5	31.1	24.0	31.9	31.8	21.8	28.9	32.4	22.0	26.9	18.5	24.2	21.3	17.6
65	-	-	-	-	28.7	24.3	21.7	27.8	23.9	23.5	28.5	26.0	22.2	28.7	26.5	20.2	26.8	27.4	20.8	25.0	17.3	23.0	20.3	16.8	-
72	-	-	-	-	-	23.7	19.3	16.6	22.8	18.6	18.4	23.4	20.8	20.3	23.9	21.5	18.7	23.8	22.3	19.4	23.4	16.3	21.6	19.4	16.1
79	-	-	-	-	-	-	-	-	18.8	14.6	14.4	19.0	16.6	18.9	19.7	17.2	17.3	19.7	18.3	18.2	19.2	14.9	19.4	18.2	14.9
85	-	-	-	-	-	-	-	-	16.0	11.8	11.6	16.2	13.8	17.6	16.8	14.4	16.3	16.8	15.1	17.2	16.2	14.1	16.4	16.6	14.3
92	-	-	-	-	-	-	-	-	13.1	9.2	8.7	13.1	10.7	16.4	14.0	11.6	15.1	13.8	12.3	15.1	13.1	13.2	13.6	13.8	13.6
98	-	-	-	-	-	-	-	-	-	6.9	11.3	8.9	14.4	11.8	9.4	14.3	11.8	10.2	12.9	11.3	12.6	11.6	11.6	12.0	-
105	-	-	-	-	-	-	-	-	-	4.8	9.2	7.0	12.3	9.6	7.4	12.5	9.6	8.1	10.8	9.2	11.2	9.4	9.4	9.6	-
111	-	-	-	-	-	-	-	-	-	-	-	-	10.7	8.0	5.8	10.9	8.0	6.7	9.3	7.6	9.6	7.8	7.8	8.0	-
118	-	-	-	-	-	-	-	-	-	-	-	-	-	9.2	6.6	4.4	9.5	6.6	4.8	7.7	6.1	7.9	6.4	6.4	6.6
124	-	-	-	-	-	-	-	-	-	-	-	-	-	-	-	8.0	5.4	3.4	6.7	4.7	6.9	5.0	5.2	5.4	
131	-	-	-	-	-	-	-	-	-	-	-	-	-	-	-	-	6.8	4.2	2.4	5.3	3.5	5.5	3.5	4.0	4.2
138	-	-	-	-	-	-	-	-	-	-	-	-	-	-	-	-	5.6	3.0	-	4.3	2.6	4.5	2.6	2.8	3.0
144	-	-	-	-	-	-	-	-	-	-	-	-	-	-	-	-	-	-	-	3.3	-	3.5	-	2.0	2.2
151	-	-	-	-	-	-	-	-	-	-	-	-	-	-	-	-	-	-	-	-	2.4	-	2.6	-	-
157	-	-	-	-	-	-	-	-	-	-	-	-	-	-	-	-	-	-	-	-	-	2.0	-	-	-

Boom extension sequence %	
Tele 1	0 0 0 50 30 50 75 40 67 83 50 70 30 60 80 20 70 85 65 90 50 95 100 100
Tele 2	0 50 50 50 30 50 75 40 67 83 50 70 30 60 80 60 70 85 65 90 100 95 100 100
Tele 3	0 0 50 0 30 50 0 60 67 83 70 70 80 60 70 90 70 70 90 70 100 95 92 100
Tele 4	0 0 0 0 30 0 0 30 0 0 40 20 80 60 35 90 70 55 90 75 100 83 92 100
Tele 5	0 0 0 0 30 0 0 30 0 0 40 20 80 60 35 90 70 55 90 75 100 83 92 100

\*) over rear

## Lifting capacities main boom in 1,000 lb

**37,000 lb**  **25'1" x 24'7"** **360°** **85%**

Radius (ft)	Length of main boom (ft)																								
	42.3	57.7	73.2	73.2	88.6	88.6	88.6	104.0	104.3	119.1	119.4	119.4	135.2	135.2	135.2	150.6	150.6	150.6	166.0	166.0	181.4	181.8	189.3	197.0	
ft	1,000 lb																								
10	264.8	-	-	-	-	-	-	-	-	-	-	-	-	-	-	-	-	-	-	-	-	-	-	-	-
11	250.2	169.7	-	-	-	-	-	-	-	-	-	-	-	-	-	-	-	-	-	-	-	-	-	-	-
13	224.6	169.7	97.0	169.7	-	-	-	-	-	-	-	-	-	-	-	-	-	-	-	-	-	-	-	-	-
15	200.7	169.7	97.0	169.7	60.6	97.0	122.6	-	-	-	-	-	-	-	-	-	-	-	-	-	-	-	-	-	-
16	188.4	169.7	97.0	169.5	60.6	97.0	118.1	60.6	97.0	-	-	-	-	-	-	-	-	-	-	-	-	-	-	-	-
19	157.4	153.8	97.0	151.5	60.6	97.0	110.6	60.6	97.0	72.7	60.9	60.6	-	-	-	-	-	-	-	-	-	-	-	-	-
23	125.2	124.3	97.0	115.7	60.6	96.9	99.9	60.6	96.8	72.7	58.8	60.6	-	-	-	-	-	-	-	-	-	-	-	-	-
26	104.4	103.3	97.0	96.3	60.6	91.0	88.0	60.6	85.5	69.4	56.8	60.6	36.3	53.3	55.9	-	-	-	-	-	-	-	-	-	-
29	85.5	84.2	84.9	80.0	60.6	78.5	75.2	60.6	73.9	65.8	54.6	60.6	36.3	50.5	54.2	32.5	43.0	47.3	-	-	-	-	-	-	-
33	66.8	65.8	67.5	62.5	60.3	64.4	61.6	60.3	61.0	57.7	51.9	60.2	35.4	46.8	52.6	31.4	41.1	46.2	31.0	33.9	-	-	-	-	-
39	-	48.6	50.0	45.1	51.4	47.1	44.2	51.0	46.5	44.4	48.7	47.1	32.5	42.3	45.6	28.8	37.6	44.2	28.3	33.5	21.6	26.7	-	-	-
46	-	34.9	36.5	31.8	38.2	33.6	30.9	37.8	33.2	33.2	38.2	35.6	29.2	38.0	35.4	25.9	34.3	34.9	25.7	31.2	20.7	26.0	22.7	19.3	-
52	-	-	28.8	24.2	30.4	26.1	23.1	29.9	25.3	25.1	30.2	27.7	26.6	31.0	28.5	23.9	30.3	28.9	23.9	28.6	19.7	25.1	22.0	18.7	-
59	-	-	22.1	17.4	23.8	19.2	16.3	23.4	18.5	18.3	23.6	20.9	24.0	24.0	21.6	21.8	24.3	22.5	22.0	23.4	18.5	22.7	21.3	17.6	-
65	-	-	-	-	19.4	14.7	12.1	18.7	14.3	14.1	19.1	16.5	22.2	19.6	17.2	20.2	19.6	18.0	20.8	19.1	17.3	19.1	18.9	16.8	-
72	-	-	-	-	15.1	10.6	8.2	14.6	10.2	10.0	14.8	12.2	18.4	15.3	12.8	18.5	15.3	13.9	16.8	14.8	16.3	15.0	15.3	15.4	-
79	-	-	-	-	-	-	-	11.3	7.1	6.7	11.5	9.1	14.8	12.2	9.6	15.1	12.2	10.4	13.5	11.5	13.7	11.8	12.0	12.2	-
85	-	-	-	-	-	-	-	9.1	4.9	4.5	9.3	6.9	12.6	9.8	7.3	12.6	9.8	8.2	11.3	9.3	11.5	9.5	9.6	10.0	-
92	-	-	-	-	-	-	-	7.0	2.8	2.3	7.0	4.5	10.3	7.4	5.2	10.3	7.4	6.1	8.9	7.0	9.2	7.2	7.4	7.6	-
98	-	-	-	-	-	-	-	-	-	-	5.4	2.9	8.5	5.8	3.4	8.9	5.8	4.5	7.1	5.4	7.4	5.6	5.6	5.8	-
105	-	-	-	-	-	-	-	-	-	-	3.9	-	7.0	4.1	1.9	7.0	4.4	2.8	5.5	3.5	5.7	3.9	4.1	4.4	-
111	-	-	-	-	-	-	-	-	-	-	-	-	5.6	2.7	-	5.8	2.9	-	4.3	2.5	4.5	2.7	2.7	2.9	-
118	-	-	-	-	-	-	-	-	-	-	-	-	4.4	1.7	-	4.6	-	-	2.8	-	3.1	-	-	-	-
124	-	-	-	-	-	-	-	-	-	-	-	-	-	-	-	3.4	-	-	2.0	-	2.2	-	-	-	-
131	-	-	-	-	-	-	-	-	-	-	-	-	-	-	-	2.6	-	-	-	-	-	-	-	-	-
138	-	-	-	-	-	-	-	-	-	-	-	-	-	-	-	1.9	-	-	-	-	-	-	-	-	-

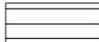

Boom extension sequence %

Tele 1	0	0	0	50	30	50	75	40	67	83	50	70	30	60	80	20	70	85	65	90	50	95	100	100
Tele 2	0	50	50	50	30	50	75	40	67	83	50	70	30	60	80	60	70	85	65	90	100	95	100	100
Tele 3	0	0	50	0	30	50	0	60	67	83	70	70	80	60	70	90	70	70	90	70	100	95	92	100
Tele 4	0	0	0	0	30	0	0	30	0	0	40	20	80	60	35	90	70	55	90	75	100	83	92	100
Tele 5	0	0	0	0	30	0	0	30	0	0	40	20	80	60	35	90	70	55	90	75	100	83	92	100

[MAIN MENU](#)

[CONTENTS](#)

## Lifting capacities main boom in 1,000 lb

12,300 lb   25'1" x 24'7" 360° 85%

Radius (ft)	Length of main boom (ft)																								
	42.3	57.7	73.2	73.2	88.6	88.6	88.6	104.0	104.3	119.1	119.4	119.4	135.2	135.2	135.2	150.6	150.6	150.6	166.0	166.0	181.4	181.8	189.3	197.0	
ft	1,000 lb																								
10	260.9	-	-	-	-	-	-	-	-	-	-	-	-	-	-	-	-	-	-	-	-	-	-	-	-
11	246.5	169.7	-	-	-	-	-	-	-	-	-	-	-	-	-	-	-	-	-	-	-	-	-	-	-
13	217.0	169.7	97.0	169.7	-	-	-	-	-	-	-	-	-	-	-	-	-	-	-	-	-	-	-	-	-
15	188.6	169.5	97.0	165.9	60.6	97.0	122.6	-	-	-	-	-	-	-	-	-	-	-	-	-	-	-	-	-	-
16	175.5	168.4	97.0	149.9	60.6	97.0	118.1	60.6	97.7	-	-	-	-	-	-	-	-	-	-	-	-	-	-	-	-
19	144.2	132.4	97.0	114.2	60.6	97.0	100.0	60.6	92.4	74.1	60.9	60.6	-	-	-	-	-	-	-	-	-	-	-	-	-
23	98.3	95.0	89.3	82.4	60.6	78.1	74.1	60.6	71.7	66.0	58.8	60.5	-	-	-	-	-	-	-	-	-	-	-	-	-
26	76.3	74.6	73.2	66.5	60.6	63.9	60.0	60.6	58.8	54.5	56.8	56.9	36.3	53.4	54.6	-	-	-	-	-	-	-	-	-	-
29	60.4	59.1	60.5	54.5	58.0	53.2	49.6	54.5	49.2	45.8	51.6	48.5	36.3	49.4	46.8	32.5	43.2	45.3	-	-	-	-	-	-	-
33	45.3	44.5	46.0	40.7	48.0	42.3	38.6	44.8	39.1	36.5	42.8	39.3	35.4	41.3	38.0	31.4	39.3	37.6	31.0	33.7	-	-	-	-	-
39	-	30.8	32.5	27.2	34.5	29.6	26.3	33.9	28.6	26.6	32.6	29.2	32.5	31.8	28.5	28.8	30.3	28.5	28.3	27.9	21.6	27.0	-	-	-
46	-	20.1	21.9	16.6	24.1	18.8	15.3	23.7	18.2	17.7	23.9	20.8	27.2	23.7	20.6	25.9	22.6	20.8	23.3	20.8	20.6	20.0	19.7	19.3	-
52	-	-	15.7	10.6	17.9	12.6	9.7	17.2	12.1	11.9	17.7	14.6	21.6	18.3	15.4	21.5	17.8	15.8	18.6	16.2	17.8	15.5	15.5	15.5	-
59	-	-	10.6	5.7	12.3	7.5	4.8	11.9	7.0	6.8	12.1	9.5	16.1	12.8	10.1	16.3	12.8	11.2	14.1	11.9	14.1	11.7	11.7	11.7	-
65	-	-	-	-	9.1	4.5	-	8.5	3.8	3.6	8.7	6.0	12.6	9.5	6.9	12.7	9.5	7.8	10.9	9.1	10.9	8.6	8.6	8.6	-
72	-	-	-	-	6.2	-	-	5.1	-	-	5.8	3.1	9.3	6.4	3.6	9.5	6.4	4.9	7.7	5.8	8.0	5.8	5.8	5.8	-
79	-	-	-	-	-	-	-	2.7	-	-	3.2	-	6.9	4.1	-	6.9	4.1	2.3	3.4	5.6	3.4	3.4	3.4	3.4	-
85	-	-	-	-	-	-	-	-	-	-	-	-	5.1	2.2	-	5.3	-	-	3.6	-	4.0	-	-	-	-
92	-	-	-	-	-	-	-	-	-	-	-	-	3.2	-	-	3.5	-	-	-	-	2.3	-	-	-	-
98	-	-	-	-	-	-	-	-	-	-	-	-	2.2	-	-	2.2	-	-	-	-	-	-	-	-	-

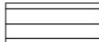

Boom extension sequence %

Tele 1	0	0	0	50	30	50	75	40	67	83	50	70	30	60	80	20	70	85	65	90	50	95	100	100
Tele 2	0	50	50	50	30	50	75	40	67	83	50	70	30	60	80	60	70	85	65	90	100	95	100	100
Tele 3	0	0	50	0	30	50	0	60	67	83	70	70	80	60	70	90	70	90	70	100	95	92	100	100
Tele 4	0	0	0	0	30	0	0	30	0	0	40	20	80	60	35	90	70	55	90	75	100	83	92	100
Tele 5	0	0	0	0	30	0	0	30	0	0	40	20	80	60	35	90	70	55	90	75	100	83	92	100

[MAIN MENU](#)

[CONTENTS](#)

## Lifting capacities main boom in 1,000 lb

0 lb   25'1" x 24'7" 360° 85%

Radius ft	Length of main boom (ft)						
	42.3 ft	57.7 ft	73.2 ft	73.2 ft	88.6 ft	88.6 ft	88.6 ft
10	253.0	-	-	-	-	-	-
11	242.8	169.7	-	-	-	-	-
13	211.1	169.7	97.0	171.9	-	-	-
15	181.3	165.2	97.0	137.7	60.6	97.0	119.6
16	168.0	146.9	97.0	123.6	60.6	97.0	108.0
19	116.4	109.2	93.6	91.7	60.6	83.0	80.7
23	72.1	70.7	70.3	63.3	60.5	60.2	56.0
26	53.9	52.6	54.4	48.4	54.5	48.5	44.3
29	41.9	40.7	42.5	37.0	44.7	38.9	35.1
33	30.8	29.6	31.4	26.1	33.6	28.3	25.2
39	-	19.1	20.5	15.8	22.7	17.8	14.9
46	-	11.8	12.9	8.7	14.7	10.3	7.4
52	-	-	8.7	-	10.4	5.8	-
59	-	-	4.8	-	6.8	-	-

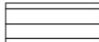

Boom extension sequence %							
Tele 1	0	0	0	50	30	50	75
Tele 2	0	50	50	50	30	50	75
Tele 3	0	0	50	0	30	50	0
Tele 4	0	0	0	0	30	0	0
Tele 5	0	0	0	0	30	0	0

[MAIN MENU](#)

[CONTENTS](#)

## Lifting capacities main boom in 1,000 lb

Special boom extension sequence

37,000 lb   25'1" x 24'7" 360° 85 %

Radius	Length of main boom (ft)					
	88.6 ft	104.3 ft	119.1 ft	135.2 ft	150.6 ft	166.0 ft
ft	1,000 lb					
15	55.7	-	-	-	-	-
16	55.7	56.3	-	-	-	-
19	52.8	51.9	38.8	-	-	-
23	48.9	46.4	38.7	-	-	-
26	46.2	43.0	36.3	21.8	-	-
29	43.6	39.8	34.1	21.8	21.8	-
33	40.6	36.2	31.4	21.8	21.8	21.8
39	36.6	31.8	28.1	21.8	21.8	21.8
46	32.8	27.9	25.1	21.5	21.8	21.5
52	29.9	25.3	22.8	19.5	20.3	19.9
59	27.1	22.9	20.9	17.8	18.9	18.5
65	23.7	21.3	19.1	16.6	17.5	17.1
72	19.7	19.6	17.4	15.2	16.3	15.9
79	-	17.0	16.0	14.0	14.9	14.7
85	-	14.6	14.8	12.8	13.9	13.0
92	-	12.3	12.7	11.6	11.8	10.7
98	-	-	11.3	10.6	10.0	9.3
105	-	-	9.4	9.6	8.3	7.4
111	-	-	-	8.4	7.1	6.4
118	-	-	-	7.2	5.7	5.0
124	-	-	-	-	4.9	4.0
131	-	-	-	-	4.0	2.9
138	-	-	-	-	3.0	2.1

Boom extension sequence %

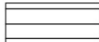

Tele 1	0	0	0	0	0	0
Tele 2	0	0	0	0	50	100
Tele 3	50	67	83	100	100	100
Tele 4	50	67	83	100	100	100
Tele 5	50	67	83	100	100	100

[MAIN MENU](#)

[CONTENTS](#)

## Lifting capacities main boom in 1,000 lb

Special boom extension sequence

12,300 lb   25'1" x 24'7" 360° 85%

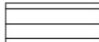

Radius	Length of main boom (ft)					
	88.6 ft	104.3 ft	119.1 ft	135.2 ft	150.6 ft	166.0 ft
ft	1,000 lb					
15	55.7	-	-	-	-	-
16	55.7	56.3	-	-	-	-
19	52.8	51.9	38.8	-	-	-
23	48.9	46.4	38.7	-	-	-
26	46.2	43.0	36.3	21.8	-	-
29	43.6	39.8	34.1	21.8	21.8	-
33	40.6	36.2	31.4	21.8	21.8	21.8
39	36.6	31.8	28.1	21.8	21.8	21.8
46	29.2	27.9	25.1	21.5	21.8	21.5
52	23.0	23.7	22.8	19.5	20.3	19.9
59	17.6	18.5	18.9	17.8	17.8	16.7
65	14.2	14.9	15.3	15.6	14.4	13.3
72	10.8	11.7	12.2	12.4	11.3	10.2
79	-	9.1	9.6	9.8	8.7	7.6
85	-	7.3	7.8	8.0	6.9	5.8
92	-	5.4	6.1	6.3	5.0	4.1
98	-	-	4.9	5.1	3.6	2.9
105	-	-	3.5	3.9	2.6	-
111	-	-	-	2.9	-	-

Boom extension sequence %						
Tele 1	0	0	0	0	0	0
Tele 2	0	0	0	0	50	100
Tele 3	50	67	83	100	100	100
Tele 4	50	67	83	100	100	100
Tele 5	50	67	83	100	100	100

[MAIN MENU](#)

[CONTENTS](#)

## Lifting capacities main boom in 1,000 lb

83,800 lb   25'1" x 17'9" 360° 85%

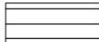

		Length of main boom (ft)																							
Radius (ft)	42.3	57.7	73.2	73.2	88.6	88.6	88.6	104.0	104.3	119.1	119.4	119.4	135.2	135.2	135.2	150.6	150.6	150.6	166.0	166.0	181.4	181.8	189.3	197.0	
ft	1,000 lb																								
10	250.4	-	-	-	-	-	-	-	-	-	-	-	-	-	-	-	-	-	-	-	-	-	-	-	-
11	236.3	169.7	-	-	-	-	-	-	-	-	-	-	-	-	-	-	-	-	-	-	-	-	-	-	-
13	211.3	169.7	97.0	169.7	-	-	-	-	-	-	-	-	-	-	-	-	-	-	-	-	-	-	-	-	-
15	191.0	169.7	97.0	169.7	60.6	97.0	122.6	-	-	-	-	-	-	-	-	-	-	-	-	-	-	-	-	-	-
16	182.3	169.7	97.0	169.5	60.6	97.0	118.1	60.6	97.0	-	-	-	-	-	-	-	-	-	-	-	-	-	-	-	-
19	159.9	157.5	97.0	154.7	60.6	97.0	110.6	60.6	97.0	72.7	60.9	60.6	-	-	-	-	-	-	-	-	-	-	-	-	-
23	121.6	120.7	97.0	117.0	60.6	96.9	100.0	60.6	96.9	72.7	58.8	60.6	-	-	-	-	-	-	-	-	-	-	-	-	-
26	98.4	97.1	97.0	94.0	60.6	94.3	91.9	60.6	90.0	69.4	56.8	60.6	36.3	53.3	55.9	-	-	-	-	-	-	-	-	-	-
29	81.9	80.8	82.3	77.7	60.6	79.7	77.0	60.6	78.4	65.8	54.6	60.6	36.3	50.5	54.2	32.5	43.0	47.3	-	-	-	-	-	-	-
33	65.6	64.9	66.2	62.1	60.3	63.6	61.0	60.3	63.2	61.0	51.9	60.2	35.4	46.8	52.8	31.4	41.1	46.2	31.0	33.9	-	-	-	-	-
39	-	49.2	50.3	46.5	51.6	48.1	45.9	51.2	47.6	47.3	48.7	49.3	32.5	42.3	49.3	28.8	37.6	44.2	28.3	33.5	21.6	26.7	-	-	-
46	-	37.1	38.2	34.5	39.8	36.0	33.8	39.3	35.8	35.6	39.6	37.4	29.2	38.0	38.0	25.9	34.3	38.9	25.7	31.2	20.7	26.0	22.7	19.3	-
52	-	-	31.2	27.6	32.5	29.2	27.0	32.1	28.8	28.5	32.3	30.3	26.6	32.8	31.0	23.9	31.7	31.8	23.9	29.2	19.7	25.1	22.0	18.7	-
59	-	-	24.9	21.6	26.2	22.7	20.9	26.0	22.5	22.3	26.2	24.0	24.0	26.5	24.5	21.8	26.7	25.6	22.0	26.2	18.5	24.2	21.3	17.6	-
65	-	-	-	-	22.2	18.9	16.9	21.8	18.6	18.2	22.0	20.0	22.2	22.4	20.4	20.2	22.4	21.3	20.8	22.0	17.3	22.0	20.3	16.8	-
72	-	-	-	-	18.6	15.0	13.3	17.9	14.8	14.6	18.3	16.4	20.3	18.6	16.8	18.7	18.6	17.5	19.4	18.3	16.3	18.3	18.5	16.1	-
79	-	-	-	-	-	-	-	14.8	11.8	11.5	15.1	13.1	17.5	15.7	13.7	17.3	15.3	14.4	16.6	15.1	14.9	15.3	15.3	14.9	-
85	-	-	-	-	-	-	-	12.6	9.8	9.5	12.8	11.3	15.3	13.3	11.5	15.5	13.3	12.2	14.4	12.8	14.1	13.1	13.1	13.3	-
92	-	-	-	-	-	-	-	10.5	7.4	7.0	10.7	9.0	13.1	11.2	9.4	13.1	11.2	10.1	12.0	10.7	12.3	10.7	11.2	11.4	-
98	-	-	-	-	-	-	-	-	4.9	9.3	7.3	11.7	9.5	7.8	11.7	9.5	8.4	10.4	9.3	10.6	9.3	9.5	9.5	9.8	-
105	-	-	-	-	-	-	-	-	3.3	7.7	5.5	10.1	7.9	5.7	10.1	7.9	6.8	9.0	7.7	9.2	7.7	7.9	8.1	8.1	-
111	-	-	-	-	-	-	-	-	-	-	-	8.9	6.7	4.3	9.1	6.9	5.2	7.8	6.3	8.0	6.5	6.7	6.9	6.9	-
118	-	-	-	-	-	-	-	-	-	-	-	7.7	4.8	2.6	7.7	5.3	3.5	6.6	4.8	6.8	5.0	5.0	5.3	5.3	-
124	-	-	-	-	-	-	-	-	-	-	-	-	-	-	6.9	4.3	2.5	5.4	3.4	5.6	4.0	4.0	4.3	4.3	-
131	-	-	-	-	-	-	-	-	-	-	-	-	-	-	5.7	3.1	-	4.0	2.2	4.4	2.6	2.9	3.1	3.1	-
138	-	-	-	-	-	-	-	-	-	-	-	-	-	-	4.8	-	-	2.8	-	-	3.5	-	-	-	-
144	-	-	-	-	-	-	-	-	-	-	-	-	-	-	-	-	-	2.0	-	2.6	-	-	-	-	-

Boom extension sequence %																									
Tele 1	0	0	0	50	30	50	75	40	67	83	50	70	30	60	80	20	70	85	65	90	50	95	100	100	100
Tele 2	0	50	50	50	30	50	75	40	67	83	50	70	30	60	80	60	70	85	65	90	100	95	100	100	100
Tele 3	0	0	50	0	30	50	0	60	67	83	70	70	80	60	70	90	70	70	90	70	100	95	92	100	100
Tele 4	0	0	0	0	30	0	0	30	0	0	40	20	80	60	35	90	70	55	90	75	100	83	92	100	100
Tele 5	0	0	0	0	30	0	0	30	0	0	40	20	80	60	35	90	70	55	90	75	100	83	92	100	100

[MAIN MENU](#)

[CONTENTS](#)

## Lifting capacities main boom in 1,000 lb

61,700 lb   25'1" x 17'9" 360° 85%

		Main boom (ft)																								
Radius (ft)		42.3	57.7	73.2	73.2	88.6	88.6	88.6	104.0	104.3	119.1	119.4	119.4	135.2	135.2	135.2	150.6	150.6	150.6	166.0	166.0	181.4	181.8	189.3	197.0	
ft		1,000 lb																								
10	246.0	-	-	-	-	-	-	-	-	-	-	-	-	-	-	-	-	-	-	-	-	-	-	-	-	
11	232.2	169.7	-	-	-	-	-	-	-	-	-	-	-	-	-	-	-	-	-	-	-	-	-	-	-	-
13	207.5	169.7	97.0	169.7	-	-	-	-	-	-	-	-	-	-	-	-	-	-	-	-	-	-	-	-	-	-
15	187.5	169.7	97.0	167.9	60.6	97.0	122.6	-	-	-	-	-	-	-	-	-	-	-	-	-	-	-	-	-	-	-
16	178.9	169.7	97.0	160.4	60.6	97.0	118.1	60.6	97.0	-	-	-	-	-	-	-	-	-	-	-	-	-	-	-	-	-
19	141.3	139.0	97.0	129.5	60.6	97.0	110.6	60.6	97.0	72.7	60.9	60.6	-	-	-	-	-	-	-	-	-	-	-	-	-	-
23	98.1	97.0	96.8	93.4	60.6	93.9	90.2	60.6	87.3	72.7	58.8	60.6	-	-	-	-	-	-	-	-	-	-	-	-	-	-
26	78.7	77.6	79.2	74.5	60.6	76.4	73.4	60.6	74.4	69.4	56.8	60.6	36.3	53.3	55.9	-	-	-	-	-	-	-	-	-	-	-
29	65.1	64.2	65.6	60.9	60.6	62.9	60.2	60.6	62.3	60.9	54.6	60.6	36.3	50.5	54.2	32.5	43.0	47.3	-	-	-	-	-	-	-	-
33	51.8	50.9	52.4	48.0	54.2	49.8	47.4	53.5	49.4	49.4	51.6	51.4	35.4	46.7	51.6	31.4	41.1	46.0	31.0	33.9	-	-	-	-	-	-
39	-	38.0	39.3	35.3	41.1	36.9	34.7	40.4	36.7	36.5	40.5	38.7	32.5	40.9	39.1	28.8	37.6	39.6	28.3	33.5	21.6	26.7	-	-	-	-
46	-	28.3	29.2	25.7	30.8	27.0	24.8	30.3	26.6	26.6	30.7	28.5	29.2	31.2	29.0	25.9	31.2	29.9	25.7	30.7	20.7	25.9	22.7	19.3	-	-
52	-	-	23.4	19.8	24.9	21.4	19.2	24.5	20.7	20.7	24.7	22.5	26.6	25.1	22.9	23.9	25.1	24.0	23.9	24.7	19.7	24.5	22.0	18.7	-	-
59	-	-	18.3	15.0	19.6	16.3	14.3	19.2	15.9	15.4	19.4	17.4	22.0	19.8	17.8	21.8	19.8	18.7	20.9	19.4	18.5	19.6	19.8	17.6	-	-
65	-	-	-	-	16.4	12.9	10.9	15.7	12.4	12.4	16.2	14.2	18.8	16.6	14.6	18.8	16.6	15.3	17.5	16.2	17.3	16.4	16.4	16.4	-	-
72	-	-	-	-	13.0	9.9	7.5	12.6	9.5	9.3	12.8	10.8	15.3	13.3	11.5	15.5	13.3	12.2	14.4	12.8	14.6	13.0	13.0	13.3	-	-
79	-	-	-	-	-	-	-	10.0	6.7	6.5	10.2	8.3	12.7	10.7	8.9	12.9	10.7	9.6	11.8	10.2	12.0	10.5	10.5	10.7	-	-
85	-	-	-	-	-	-	-	8.2	4.7	4.3	8.4	6.4	10.8	9.1	6.9	11.3	9.1	7.8	10.0	8.4	10.2	8.9	8.9	9.1	-	-
92	-	-	-	-	-	-	-	6.5	2.6	-	6.7	4.3	9.2	7.2	4.8	9.4	7.2	5.7	8.1	6.7	8.3	6.7	7.0	7.2	-	-
98	-	-	-	-	-	-	-	-	-	-	5.1	2.7	7.8	5.6	3.2	8.0	5.6	4.2	6.9	5.1	7.1	5.1	5.4	5.6	-	-
105	-	-	-	-	-	-	-	-	-	-	3.5	-	6.6	4.1	-	6.8	4.1	2.6	5.2	3.5	5.5	3.5	3.9	4.1	-	-
111	-	-	-	-	-	-	-	-	-	-	-	-	5.4	2.9	-	5.6	2.9	-	4.0	2.3	4.3	2.5	2.7	2.9	-	-
118	-	-	-	-	-	-	-	-	-	-	-	-	4.4	-	-	4.4	-	-	2.8	-	3.1	-	-	-	-	-
124	-	-	-	-	-	-	-	-	-	-	-	-	-	-	-	3.4	-	-	-	-	2.2	-	-	-	-	-
131	-	-	-	-	-	-	-	-	-	-	-	-	-	-	-	2.4	-	-	-	-	-	-	-	-	-	-

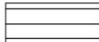

Boom extension sequence %

Tele 1	0	0	0	50	30	50	75	40	67	83	50	70	30	60	80	20	70	85	65	90	50	95	100	100
Tele 2	0	50	50	50	30	50	75	40	67	83	50	70	30	60	80	60	70	85	65	90	100	95	100	100
Tele 3	0	0	50	0	30	50	0	60	67	83	70	70	80	60	70	90	70	70	90	70	100	95	92	100
Tele 4	0	0	0	0	30	0	0	30	0	0	40	20	80	60	35	90	70	55	90	75	100	83	92	100
Tele 5	0	0	0	0	30	0	0	30	0	0	40	20	80	60	35	90	70	55	90	75	100	83	92	100

[MAIN MENU](#)

[CONTENTS](#)

## Lifting capacities main boom in 1,000 lb

**37,000 lb**   **25'1" x 17'9"** **360°** **85%**

		Main boom (ft)																									
Radius (ft)		42.3	57.7	73.2	73.2	88.6	88.6	88.6	104.0	104.3	119.1	119.4	119.4	135.2	135.2	135.2	150.6	150.6	150.6	166.0	166.0	181.4	181.8	189.3	197.0		
ft		1,000 lb																									
10	241.2	-	-	-	-	-	-	-	-	-	-	-	-	-	-	-	-	-	-	-	-	-	-	-	-	-	
11	227.5	169.7	-	-	-	-	-	-	-	-	-	-	-	-	-	-	-	-	-	-	-	-	-	-	-	-	-
13	203.3	169.7	97.0	164.6	-	-	-	-	-	-	-	-	-	-	-	-	-	-	-	-	-	-	-	-	-	-	-
15	178.1	156.1	97.0	134.3	60.6	97.0	119.1	-	-	-	-	-	-	-	-	-	-	-	-	-	-	-	-	-	-	-	-
16	156.8	141.6	97.0	122.3	60.6	97.0	109.1	60.6	99.3	-	-	-	-	-	-	-	-	-	-	-	-	-	-	-	-	-	-
19	109.4	105.8	96.6	95.8	60.6	87.5	86.5	60.6	82.1	75.6	60.9	60.6	-	-	-	-	-	-	-	-	-	-	-	-	-	-	-
23	72.8	71.7	73.4	67.9	60.6	68.4	65.1	60.5	63.3	58.9	58.8	60.5	-	-	-	-	-	-	-	-	-	-	-	-	-	-	-
26	57.6	56.7	58.5	53.6	59.4	55.3	52.4	58.1	53.5	49.9	55.3	52.4	36.3	53.6	50.3	-	-	-	-	-	-	-	-	-	-	-	-
29	47.3	46.1	47.8	43.2	49.8	45.1	42.4	48.9	44.5	42.6	48.2	45.1	36.3	46.8	43.7	32.5	43.5	42.3	-	-	-	-	-	-	-	-	-
33	37.0	36.0	37.5	33.2	39.3	35.1	32.5	38.7	34.5	34.3	39.1	36.7	35.3	39.1	36.0	31.4	37.6	35.6	31.0	33.7	-	-	-	-	-	-	-
39	-	26.3	27.5	23.5	29.0	25.0	22.6	28.6	24.6	24.6	29.0	26.6	31.7	29.4	27.2	28.8	29.3	27.8	28.3	27.5	21.6	26.7	-	-	-	-	-
46	-	18.6	19.5	16.0	21.3	17.3	15.1	20.8	16.9	16.9	21.1	18.9	23.9	21.5	19.3	24.1	21.5	20.2	22.6	21.1	20.6	20.6	20.2	19.3	-	-	-
52	-	-	15.1	11.8	16.6	12.9	10.9	16.2	12.4	12.4	16.4	14.4	19.3	16.9	14.9	19.3	16.9	15.5	18.0	16.4	18.0	16.6	16.4	16.3	-	-	-
59	-	-	11.2	7.5	12.5	9.0	6.6	12.1	8.4	8.1	12.3	10.1	15.0	12.8	10.6	15.0	12.8	11.7	13.9	12.3	14.1	12.5	12.5	12.5	-	-	-
65	-	-	-	-	9.9	6.0	3.6	9.5	5.5	5.3	9.7	7.5	12.3	10.1	8.1	12.3	10.1	9.0	11.0	9.7	11.5	9.9	9.9	10.1	-	-	-
72	-	-	-	-	7.5	3.1	-	6.9	2.7	2.4	7.1	4.7	9.7	7.5	5.1	9.9	7.5	6.2	8.4	7.1	8.8	7.3	7.3	7.5	-	-	-
79	-	-	-	-	-	-	-	4.5	-	-	4.7	2.3	7.6	5.2	3.0	7.8	5.2	3.8	6.7	4.7	6.9	4.9	5.2	5.2	-	-	-
85	-	-	-	-	-	-	-	2.9	-	-	3.1	-	6.4	3.6	-	6.4	3.6	-	4.9	3.1	5.1	3.1	3.3	3.6	-	-	-
92	-	-	-	-	-	-	-	-	-	-	-	-	4.6	-	-	4.8	-	-	3.0	-	3.4	-	-	-	-	-	-
98	-	-	-	-	-	-	-	-	-	-	-	-	3.3	-	-	3.4	-	-	-	-	-	-	-	-	-	-	-
105	-	-	-	-	-	-	-	-	-	-	-	-	-	-	-	2.4	-	-	-	-	-	-	-	-	-	-	-

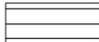

Boom extension sequence %

Tele 1	0	0	0	50	30	50	75	40	67	83	50	70	30	60	80	20	70	85	65	90	50	95	100	100
Tele 2	0	50	50	50	30	50	75	40	67	83	50	70	30	60	80	60	70	85	65	90	100	95	100	100
Tele 3	0	0	50	0	30	50	0	60	67	83	70	70	80	60	70	90	70	70	90	70	100	95	92	100
Tele 4	0	0	0	0	30	0	0	30	0	0	40	20	80	60	35	90	70	55	90	75	100	83	92	100
Tele 5	0	0	0	0	30	0	0	30	0	0	40	20	80	60	35	90	70	55	90	75	100	83	92	100

[MAIN MENU](#)

[CONTENTS](#)

**Lifting capacities main boom in 1,000 lb**  
Special boom extension sequence

**37,000 lb**   **25'1" x 17'9"** **360°** **85%**

Radius	Main boom (ft)					
	88.6 ft	104.3 ft	119.1 ft	135.2 ft	150.6 ft	166.0 ft
ft	1,000 lb					
15	55.7	-	-	-	-	-
16	55.7	56.3	-	-	-	-
19	52.8	51.9	38.8	-	-	-
23	48.9	46.4	38.7	-	-	-
26	46.2	43.0	36.3	21.8	-	-
29	43.6	39.8	34.1	21.8	21.8	-
33	40.5	36.2	31.4	21.8	21.8	21.8
39	33.2	31.8	28.1	21.8	21.8	21.8
46	25.0	25.7	25.0	21.5	21.8	21.5
52	20.2	21.1	21.2	19.5	20.1	19.5
59	16.1	16.7	17.0	17.2	16.3	15.4
65	13.2	13.9	14.3	14.6	13.5	12.8
72	10.6	11.5	11.7	11.9	10.8	10.2
79	-	9.4	9.6	9.8	8.9	8.1
85	-	7.7	8.2	8.4	7.5	6.8
92	-	6.5	6.8	7.0	6.1	5.2
98	-	-	5.8	5.8	4.9	4.0
105	-	-	4.6	4.8	3.5	2.6
111	-	-	-	4.0	2.7	-
118	-	-	-	2.8	-	-

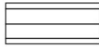

Boom extension sequence %						
Tele 1	0	0	0	0	0	0
Tele 2	0	0	0	0	50	100
Tele 3	50	67	83	100	100	100
Tele 4	50	67	83	100	100	100
Tele 5	50	67	83	100	100	100

[MAIN MENU](#)

[CONTENTS](#)

## Lifting capacities main boom in 1,000 lb

Special boom extension sequence

12,300 lb   25'1" x 17'9" 360° 85%

Radius	Main boom (ft)					
	88.6 ft	104.3 ft	119.1 ft	135.2 ft	150.6 ft	166.0 ft
	1,000 lb					
15	55.7	-	-	-	-	-
16	55.7	56.3	-	-	-	-
19	52.8	51.9	38.8	-	-	-
23	48.8	46.4	38.7	-	-	-
26	44.4	43.0	36.3	21.8	-	-
29	37.0	37.5	34.1	21.8	21.8	-
33	29.0	30.1	30.6	21.8	21.8	21.7
39	21.6	22.3	22.7	21.8	21.4	19.7
46	15.3	16.2	16.7	16.9	16.0	14.9
52	12.1	12.6	13.0	13.3	12.4	11.7
59	9.0	9.5	9.9	10.1	9.2	8.4
65	7.0	7.6	7.9	8.1	7.2	6.5
72	5.1	5.7	6.2	6.4	5.3	4.4
79	-	4.1	4.5	4.7	3.4	2.5
85	-	2.7	3.1	3.3	2.2	-

Boom extension sequence %

Tele 1	0	0	0	0	0	0
Tele 2	0	0	0	0	50	100
Tele 3	50	67	83	100	100	100
Tele 4	50	67	83	100	100	100
Tele 5	50	67	83	100	100	100

[MAIN MENU](#)

[CONTENTS](#)

## Notes to lifting capacity

---

Lifting capacities do not exceed 85% of tipping load.

Weight of hook blocks and slings are part of the load, and are to be deducted from the capacity ratings.

Crane operation is permissible up to a

wind speed of ..... 32 ft/s

Consult operation manual for further details on wind speed.

All capacities above the parting line are based on structural strength. Capacities below the parting line are based on machine stability.

Crane operation is subject to computer charts, only!

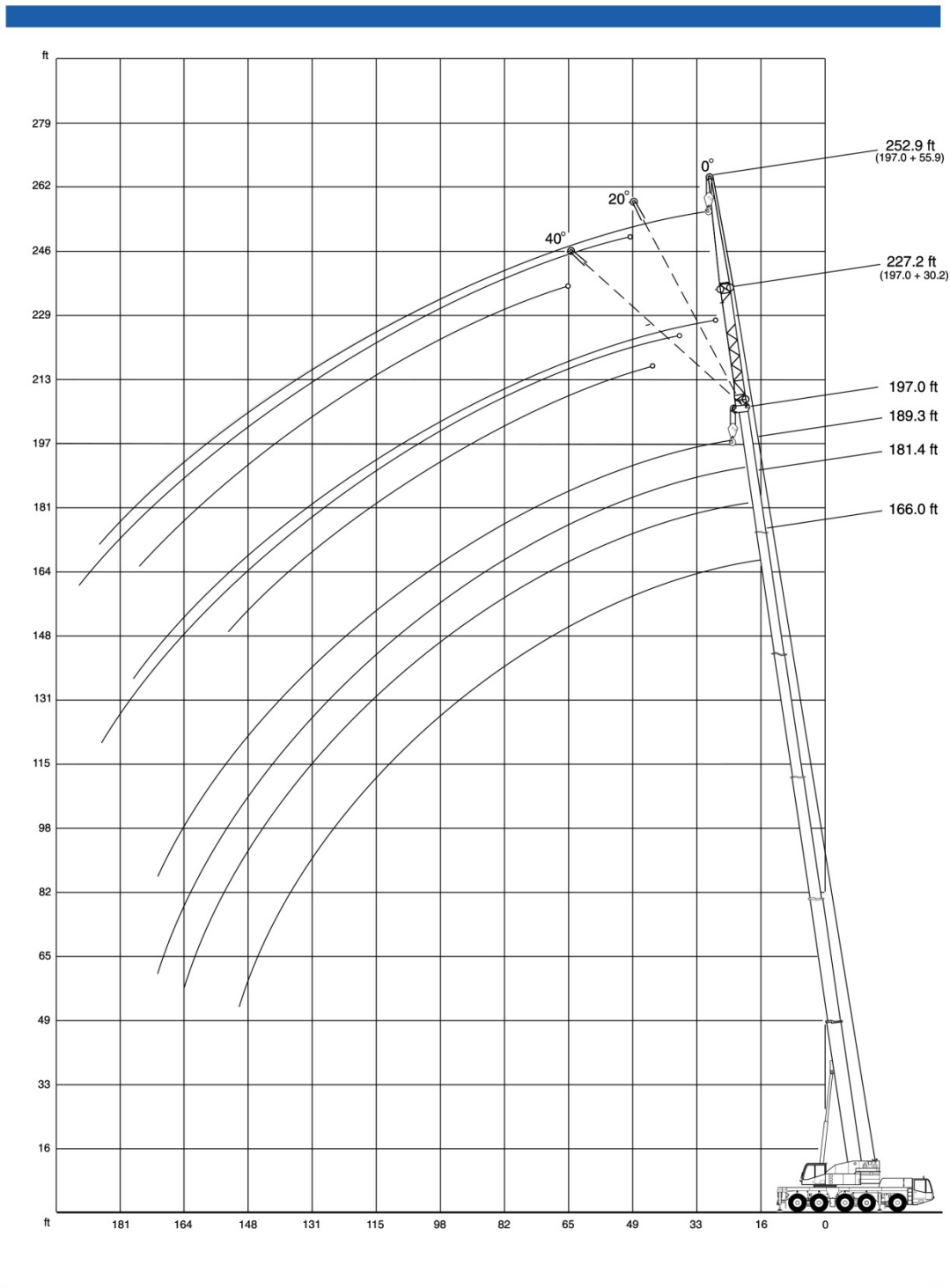
For crane operations consult operation manual first!

---

[MAIN MENU](#)

[CONTENTS](#)

## Working range main boom extension

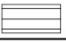


[MAIN MENU](#)

[CONTENTS](#)

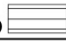
## Lifting capacities main boom extension in 1,000 lb

### Main boom: 166.0 ft

83,800 lb  25'1" x 24'7" 360° 85%


Radius ft	Extension					
	30.2 ft			55.9 ft		
	0°	20°	40°	0°	20°	40°
ft	1,000 lb					
46	19.8	-	-	-	-	-
52	18.8	-	-	9.2	-	-
59	17.4	13.0	11.4	8.8	-	-
65	16.6	13.0	11.4	8.4	6.6	-
72	15.4	12.7	11.2	8.1	6.6	-
79	14.5	12.5	10.7	7.9	6.3	5.5
85	13.9	12.1	10.5	7.5	6.1	5.5
92	12.9	11.8	10.3	7.2	5.7	5.5
98	12.3	11.4	10.1	6.8	5.5	5.5
105	11.6	10.8	9.9	6.6	5.2	5.2
111	11.2	10.6	9.7	6.4	5.2	5.2
118	10.3	10.1	9.4	6.1	5.0	5.0
124	9.7	9.7	9.0	5.7	5.0	5.0
131	8.4	9.2	8.8	5.5	4.8	4.8
138	7.0	7.6	8.1	5.2	4.8	4.8
144	6.2	6.6	-	5.0	4.6	4.6
151	5.0	5.5	-	4.8	4.6	4.6
157	4.2	4.6	-	4.6	4.4	4.4
164	3.0	3.5	-	4.4	4.4	4.4
170	2.4	2.9	-	3.4	4.4	-
177	1.7	-	-	2.6	3.5	-
184	-	-	-	2.1	2.6	-
190	-	-	-	-	2.2	-

### Main boom: 189.3 ft

83,800 lb  25'1" x 24'7" 360° 85%


Radius ft	Extension					
	30.2 ft			55.9 ft		
	0°	20°	40°	0°	20°	40°
ft	1,000 lb					
46	-	-	-	-	-	-
52	12.5	-	-	-	-	-
59	12.3	-	-	7.0	-	-
65	12.1	-	-	7.0	-	-
72	11.9	10.3	10.1	6.8	-	-
79	11.4	10.3	10.1	6.6	5.5	-
85	10.8	9.9	9.9	6.6	5.3	-
92	10.3	9.6	9.4	6.3	5.2	5.0
98	9.9	9.2	9.2	6.1	5.0	5.0
105	9.4	8.8	9.0	5.7	4.8	5.0
111	9.0	8.4	8.4	5.5	4.8	4.8
118	8.8	7.9	7.9	5.5	4.6	4.8
124	8.2	7.7	7.7	5.3	4.6	4.6
131	7.7	7.2	7.2	5.0	4.6	4.6
138	7.2	7.0	6.8	4.8	4.4	4.6
144	6.2	6.6	6.6	4.6	4.4	4.4
151	5.0	5.7	6.3	4.4	4.1	4.4
157	4.2	4.9	-	4.4	4.1	4.2
164	3.3	3.9	-	4.1	4.1	4.1
170	2.7	3.1	-	3.3	3.9	4.1
177	2.0	2.4	-	2.6	3.5	3.9
184	-	1.7	-	1.9	2.8	-
190	-	-	-	-	2.2	-

### Main boom: 181.8 ft

83,800 lb  25'1" x 24'7" 360° 85%

Radius ft	Extension					
	30.2 ft			55.9 ft		
	0°	20°	40°	0°	20°	40°
ft	1,000 lb					
46	16.0	-	-	-	-	-
52	15.2	-	-	8.1	-	-
59	14.5	-	-	7.9	-	-
65	13.7	11.6	10.8	7.5	-	-
72	12.8	11.6	10.8	7.2	5.7	-
79	12.1	11.2	10.5	7.0	5.7	-
85	11.7	10.6	10.3	6.8	5.5	5.2
92	11.2	10.3	9.9	6.6	5.5	5.2
98	10.6	9.9	9.7	6.4	5.3	5.2
105	10.1	9.4	9.4	6.1	5.0	5.0
111	9.7	9.2	9.0	5.7	5.0	5.0
118	9.2	8.8	8.8	5.7	4.8	4.8
124	8.8	8.4	8.4	5.5	4.8	4.8
131	8.1	7.9	7.9	5.2	4.6	4.8
138	7.2	7.4	7.7	5.0	4.6	4.6
144	6.2	6.8	7.2	4.8	4.4	4.6
151	5.0	5.7	-	4.6	4.4	4.4
157	4.2	4.9	-	4.4	4.2	4.4
164	3.3	3.9	-	4.1	4.1	4.4
170	2.7	3.1	-	3.3	4.1	4.2
177	2.0	2.2	-	2.6	3.5	-
184	-	-	-	2.1	2.8	-
190	-	-	-	-	2.2	-

### Main boom: 197.0 ft

83,800 lb  25'1" x 24'7" 360° 85%

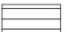
Radius ft	Extension					
	30.2 ft			55.9 ft		
	0°	20°	40°	0°	20°	40°
ft	1,000 lb					
46	-	-	-	-	-	-
52	11.2	-	-	-	-	-
59	10.8	-	-	6.6	-	-
65	10.6	-	-	6.4	-	-
72	10.3	9.4	9.7	6.3	-	-
79	10.1	9.4	9.6	6.1	4.6	-
85	9.9	9.2	9.2	6.1	4.6	-
92	9.4	8.8	9.0	5.7	4.6	4.8
98	9.2	8.4	8.4	5.5	4.6	4.8
105	9.0	8.1	8.1	5.2	4.6	4.8
111	8.4	7.7	7.7	5.0	4.6	4.6
118	7.9	7.4	7.4	5.0	4.6	4.6
124	7.7	7.1	7.1	4.8	4.4	4.6
131	7.2	6.8	6.8	4.6	4.4	4.6
138	6.8	6.6	6.6	4.4	4.4	4.4
144	6.4	6.1	6.4	4.4	4.2	4.4
151	5.2	5.7	5.7	4.1	4.1	4.1
157	4.4	5.1	-	3.9	3.9	4.1
164	3.3	4.1	-	3.9	3.9	4.1
170	2.7	3.1	-	3.3	3.5	3.9
177	2.0	2.4	-	2.6	3.5	3.9
184	-	1.7	-	2.1	2.8	-
190	-	-	-	-	2.2	-

[MAIN MENU](#)

[CONTENTS](#)

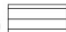
## Lifting capacities main boom extension in 1,000 lb

### Main boom: 166.0 ft

61,700 lb  25'1" x 24'7" 360° 85%

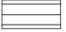
Radius ft	Extension					
	30.2 ft			55.9 ft		
	0°	20°	40°	0°	20°	40°
ft	1,000 lb					
46	19.8	-	-	-	-	-
52	18.8	-	-	9.2	-	-
59	17.4	13.0	11.4	8.8	-	-
65	16.6	13.0	11.4	8.4	6.6	-
72	15.4	12.7	11.2	8.1	6.6	-
79	14.5	12.5	10.7	7.9	6.3	5.5
85	13.9	12.1	10.5	7.5	6.1	5.5
92	12.9	11.8	10.3	7.2	5.7	5.5
98	12.1	11.4	10.1	6.8	5.5	5.5
105	10.1	10.8	9.9	6.6	5.2	5.2
111	8.5	9.7	9.7	6.4	5.2	5.2
118	7.0	7.9	8.8	6.1	5.0	5.0
124	5.6	6.7	7.2	5.7	5.0	5.0
131	4.4	5.3	5.7	5.5	4.8	4.8
138	3.2	4.1	4.5	4.3	4.8	4.8
144	2.4	3.1	-	3.5	4.6	4.6
151	1.7	2.1	-	2.6	3.9	4.6
157	-	-	-	2.0	2.9	3.6
164	-	-	-	-	2.2	2.6
170	-	-	-	-	-	-

### Main boom: 189.3 ft

61,700 lb  25'1" x 24'7" 360° 85%

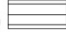
Radius ft	Extension					
	30.2 ft			55.9 ft		
	0°	20°	40°	0°	20°	40°
ft	1,000 lb					
46	-	-	-	-	-	-
52	12.5	-	-	-	-	-
59	12.3	-	-	7.0	-	-
65	12.1	-	-	7.0	-	-
72	11.9	10.3	10.1	6.8	-	-
79	11.4	10.3	10.1	6.6	5.5	-
85	10.8	9.9	9.9	6.6	5.3	-
92	10.3	9.6	9.4	6.3	5.2	5.0
98	9.9	9.2	9.2	6.1	5.0	5.0
105	9.4	8.8	9.0	5.7	4.8	5.0
111	8.8	8.4	8.4	5.5	4.8	4.8
118	7.0	7.9	7.9	5.5	4.6	4.8
124	5.8	6.9	7.5	5.3	4.6	4.6
131	4.6	5.5	6.2	5.0	4.6	4.6
138	3.5	4.3	4.8	4.3	4.4	4.6
144	2.6	3.3	4.0	3.3	4.4	4.4
151	1.7	2.4	2.8	2.6	3.9	4.4
157	-	-	-	1.8	2.9	4.0
164	-	-	-	-	2.2	2.8
170	-	-	-	-	-	2.2

### Main boom: 181.8 ft

61,700 lb  25'1" x 24'7" 360° 85%

Radius ft	Extension					
	30.2 ft			55.9 ft		
	0°	20°	40°	0°	20°	40°
ft	1,000 lb					
46	16.0	-	-	-	-	-
52	15.2	-	-	8.1	-	-
59	14.5	-	-	7.9	-	-
65	13.7	11.6	10.8	7.5	-	-
72	12.8	11.6	10.8	7.2	5.7	-
79	12.1	11.2	10.5	7.0	5.7	-
85	11.7	10.6	10.3	6.8	5.5	5.2
92	11.2	10.3	9.9	6.6	5.5	5.2
98	10.6	9.9	9.7	6.4	5.3	5.2
105	10.1	9.4	9.4	6.1	5.0	5.0
111	8.9	9.2	9.0	5.7	5.0	5.0
118	7.0	8.1	8.8	5.7	4.8	4.8
124	5.8	6.9	7.4	5.5	4.8	4.8
131	4.6	5.5	6.2	5.2	4.6	4.8
138	3.5	4.3	4.8	4.3	4.6	4.6
144	2.6	3.3	3.6	3.3	4.4	4.6
151	1.7	2.4	-	2.6	3.9	4.4
157	-	-	-	2.0	2.9	4.0
164	-	-	-	-	2.2	2.8
170	-	-	-	-	-	2.0

### Main boom: 197.0 ft

61,700 lb  25'1" x 24'7" 360° 85%

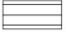
Radius ft	Extension					
	30.2 ft			55.9 ft		
	0°	20°	40°	0°	20°	40°
ft	1,000 lb					
46	-	-	-	-	-	-
52	11.2	-	-	-	-	-
59	10.8	-	-	6.6	-	-
65	10.6	-	-	6.4	-	-
72	10.3	9.4	9.7	6.3	-	-
79	10.1	9.4	9.6	6.1	4.6	-
85	9.9	9.2	9.2	6.1	4.6	-
92	9.4	8.8	9.0	5.7	4.6	4.8
98	9.2	8.4	8.4	5.5	4.6	4.8
105	9.0	8.1	8.1	5.2	4.6	4.8
111	8.4	7.7	7.7	5.0	4.6	4.6
118	7.2	7.4	7.4	5.0	4.6	4.6
124	6.2	7.1	7.1	4.8	4.4	4.6
131	4.8	5.5	6.4	4.6	4.4	4.6
138	3.5	4.5	5.0	4.3	4.4	4.4
144	2.6	3.3	4.0	3.5	4.2	4.4
151	1.9	2.6	2.8	2.6	4.1	4.1
157	-	1.8	-	2.0	3.1	3.9
164	-	-	-	-	2.2	3.0
170	-	-	-	-	-	2.2

[MAIN MENU](#)

[CONTENTS](#)

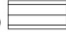
## Lifting capacities main boom extension in 1,000 lb

### Main boom: 166.0 ft

37,000 lb  25'1" x 24'7" 360° 85%

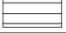
Radius ft	Extension					
	30.2 ft			55.9 ft		
	0°	20°	40°	0°	20°	40°
ft	1,000 lb					
46	19.8	-	-	-	-	-
52	18.8	-	-	9.2	-	-
59	17.4	13.0	11.4	8.8	-	-
65	16.6	13.0	11.4	8.4	6.6	-
72	15.4	12.7	11.2	8.1	6.6	-
79	12.6	12.5	10.7	7.9	6.3	5.5
85	10.4	12.1	10.5	7.5	6.1	5.5
92	8.1	9.6	10.3	7.2	5.7	5.5
98	6.5	7.8	8.9	6.8	5.5	5.5
105	4.8	6.1	6.8	5.7	5.2	5.2
111	3.4	4.7	5.4	4.7	5.2	5.2
118	2.2	3.1	3.9	3.3	5.0	5.0
124	-	2.0	2.7	2.3	4.2	5.0
131	-	-	-	-	2.9	4.2
138	-	-	-	-	1.9	2.8
144	-	-	-	-	-	2.0

### Main boom: 189.3 ft

37,000 lb  25'1" x 24'7" 360° 85%

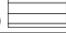
Radius ft	Extension					
	30.2 ft			55.9 ft		
	0°	20°	40°	0°	20°	40°
ft	1,000 lb					
46	-	-	-	-	-	-
52	12.5	-	-	-	-	-
59	12.3	-	-	7.0	-	-
65	12.1	-	-	7.0	-	-
72	11.9	10.3	10.1	6.8	-	-
79	11.4	10.3	10.1	6.6	5.5	-
85	10.4	9.9	9.9	6.6	5.3	-
92	8.1	9.6	9.4	6.3	5.2	5.0
98	6.7	8.0	9.0	6.1	5.0	5.0
105	4.8	6.3	7.2	5.7	4.8	5.0
111	3.6	4.9	5.6	4.7	4.8	4.8
118	2.4	3.3	4.2	3.1	4.6	4.8
124	-	2.3	3.0	2.2	4.2	4.6
131	-	-	2.0	-	2.9	4.4
138	-	-	-	-	1.9	3.0
144	-	-	-	-	-	2.2

### Main boom: 181.8 ft

37,000 lb  25'1" x 24'7" 360° 85%

Radius ft	Extension					
	30.2 ft			55.9 ft		
	0°	20°	40°	0°	20°	40°
ft	1,000 lb					
46	16.0	-	-	-	-	-
52	15.2	-	-	8.1	-	-
59	14.5	-	-	7.9	-	-
65	13.7	11.6	10.8	7.5	-	-
72	12.8	11.6	10.8	7.2	5.7	-
79	12.0	11.2	10.5	7.0	5.7	-
85	10.4	10.6	10.3	6.8	5.5	5.2
92	8.1	9.8	9.9	6.6	5.5	5.2
98	6.7	8.0	9.0	6.4	5.3	5.2
105	4.8	6.3	7.2	5.7	5.0	5.0
111	3.6	4.7	5.6	4.7	5.0	5.0
118	2.4	3.3	4.2	3.3	4.8	4.8
124	-	2.3	3.0	2.3	4.2	4.8
131	-	-	1.8	-	2.9	4.2
138	-	-	-	-	1.9	3.0
144	-	-	-	-	-	2.2

### Main boom: 197.0 ft

37,000 lb  25'1" x 24'7" 360° 85%

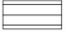
Radius ft	Extension					
	30.2 ft			55.9 ft		
	0°	20°	40°	0°	20°	40°
ft	1,000 lb					
46	-	-	-	-	-	-
52	11.2	-	-	-	-	-
59	10.8	-	-	6.6	-	-
65	10.6	-	-	6.4	-	-
72	10.3	9.4	9.7	6.3	-	-
79	10.1	9.4	9.6	6.1	4.6	-
85	9.9	9.2	9.2	6.1	4.6	-
92	8.3	8.8	9.0	5.7	4.6	4.8
98	6.9	7.9	8.4	5.5	4.6	4.8
105	5.0	6.3	7.2	5.2	4.6	4.8
111	3.6	4.9	5.8	4.4	4.6	4.6
118	2.4	3.5	4.4	3.3	4.6	4.6
124	-	2.5	3.2	2.3	4.2	4.6
131	-	-	2.0	-	3.1	4.4
138	-	-	-	-	1.9	3.0
144	-	-	-	-	-	2.2

MAIN MENU

CONTENTS

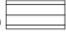
## Lifting capacities main boom extension in 1,000 lb

### Main boom: 166.0 ft

83,800 lb  25'1" x 17'9" 360° 85%

Radius ft	Extension					
	30.2 ft			55.9 ft		
	0°	20°	40°	0°	20°	40°
ft	1,000 lb					
46	19.8	-	-	-	-	-
52	18.8	-	-	9.2	-	-
59	17.4	13.0	11.4	8.8	-	-
65	16.6	13.0	11.4	8.4	6.6	-
72	15.4	12.7	11.2	8.1	6.6	-
79	14.5	12.5	10.7	7.9	6.3	5.5
85	13.7	12.1	10.5	7.5	6.1	5.5
92	11.6	11.8	10.3	7.2	5.7	5.5
98	10.0	10.8	10.1	6.8	5.5	5.5
105	8.1	9.2	9.9	6.6	5.2	5.2
111	7.1	7.8	8.5	6.4	5.2	5.2
118	5.5	6.6	7.0	6.1	5.0	5.0
124	4.5	5.4	5.8	5.5	5.0	5.0
131	3.3	4.2	4.6	4.4	4.8	4.8
138	2.3	3.0	3.2	3.2	4.8	4.8
144	-	2.2	-	2.4	4.0	4.6
151	-	-	-	1.7	2.8	3.5
157	-	-	-	-	2.2	2.5
164	-	-	-	-	-	1.7

### Main boom: 189.3 ft

83,800 lb  25'1" x 17'9" 360° 85%

Radius ft	Extension					
	30.2 ft			55.9 ft		
	0°	20°	40°	0°	20°	40°
ft	1,000 lb					
46	-	-	-	-	-	-
52	12.5	-	-	-	-	-
59	12.3	-	-	7.0	-	-
65	12.1	-	-	7.0	-	-
72	11.9	10.3	10.1	6.8	-	-
79	11.4	10.3	10.1	6.6	5.5	-
85	10.8	9.9	9.9	6.6	5.3	-
92	10.3	9.6	9.4	6.3	5.2	5.0
98	9.9	9.2	9.2	6.1	5.0	5.0
105	8.3	8.8	9.0	5.7	4.8	5.0
111	7.3	8.0	8.4	5.5	4.8	4.8
118	5.7	6.8	7.5	5.5	4.6	4.8
124	4.7	5.6	6.5	5.3	4.6	4.6
131	3.5	4.4	4.9	4.4	4.6	4.6
138	2.4	3.2	3.9	3.2	4.3	4.6
144	1.8	2.4	2.9	2.4	3.9	4.4
151	-	-	1.9	1.7	2.8	3.9
157	-	-	-	-	2.2	2.9
164	-	-	-	-	-	2.2

### Main boom: 181.8 ft

83,800 lb  25'1" x 17'9" 360° 85%

Radius ft	Extension					
	30.2 ft			55.9 ft		
	0°	20°	40°	0°	20°	40°
ft	1,000 lb					
46	16.0	-	-	-	-	-
52	15.2	-	-	8.1	-	-
59	14.5	-	-	7.9	-	-
65	13.7	11.6	10.8	7.5	-	-
72	12.8	11.6	10.8	7.2	5.7	-
79	12.1	11.2	10.5	7.0	5.7	-
85	11.7	10.6	10.3	6.8	5.5	5.2
92	11.2	10.3	9.9	6.6	5.5	5.2
98	10.0	9.9	9.7	6.4	5.3	5.2
105	8.3	9.4	9.4	6.1	5.0	5.0
111	7.3	8.0	8.8	5.7	5.0	5.0
118	5.7	6.8	7.3	5.7	4.8	4.8
124	4.7	5.6	6.2	5.5	4.8	4.8
131	3.3	4.4	4.8	4.4	4.6	4.8
138	2.4	3.2	3.9	3.2	4.6	4.6
144	1.8	2.4	2.7	2.4	4.0	4.6
151	-	-	-	1.7	2.8	3.9
157	-	-	-	-	2.2	2.9
164	-	-	-	-	-	2.2

### Main boom: 197.0 ft

83,800 lb  25'1" x 17'9" 360° 85%

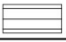
Radius ft	Extension					
	30.2 ft			55.9 ft		
	0°	20°	40°	0°	20°	40°
ft	1,000 lb					
46	-	-	-	-	-	-
52	11.2	-	-	-	-	-
59	10.8	-	-	6.6	-	-
65	10.6	-	-	6.4	-	-
72	10.3	9.4	9.7	6.3	-	-
79	10.1	9.4	9.6	6.1	4.6	-
85	9.9	9.2	9.2	6.1	4.6	-
92	9.4	8.8	9.0	5.7	4.6	4.8
98	9.2	8.4	8.4	5.5	4.6	4.8
105	8.8	8.1	8.1	5.2	4.6	4.8
111	7.4	7.7	7.7	5.0	4.6	4.6
118	6.1	7.0	7.4	5.0	4.6	4.6
124	4.9	5.8	6.5	4.8	4.4	4.6
131	3.5	4.6	5.1	4.4	4.4	4.6
138	2.6	3.2	4.1	3.2	4.3	4.4
144	1.8	2.4	2.9	2.4	3.9	4.4
151	-	1.7	2.1	1.7	3.0	4.1
157	-	-	-	-	2.2	3.1
164	-	-	-	-	-	2.2

MAIN MENU

CONTENTS

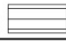
## Lifting capacities main boom extension in 1,000 lb

### Main boom: 166.0 ft

61,700 lb  25'1" x 17'9" 360° 85%

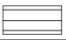
Radius ft	Extension					
	30.2 ft			55.9 ft		
	0°	20°	40°	0°	20°	40°
ft	1,000 lb					
46	19.8	-	-	-	-	-
52	18.8	-	-	9.2	-	-
59	17.4	13.0	11.4	8.8	-	-
65	16.6	13.0	11.4	8.4	6.6	-
72	13.7	12.7	11.2	8.1	6.6	-
79	11.1	12.4	10.7	7.9	6.3	5.5
85	9.3	10.4	10.5	7.5	6.1	5.5
92	7.4	8.7	9.4	7.2	5.7	5.5
98	5.8	7.1	8.0	6.8	5.5	5.5
105	4.4	5.5	6.6	5.5	5.2	5.2
111	3.1	4.3	4.9	4.3	5.2	5.2
118	2.0	2.8	3.5	3.1	4.8	5.0
124	-	2.0	2.5	2.0	3.6	5.0
131	-	-	-	-	2.6	4.0
138	-	-	-	-	1.7	2.6
144	-	-	-	-	-	1.8

### Main boom: 189.3 ft

61,700 lb  25'1" x 17'9" 360° 85%

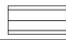
Radius ft	Extension					
	30.2 ft			55.9 ft		
	0°	20°	40°	0°	20°	40°
ft	1,000 lb					
46	-	-	-	-	-	-
52	12.5	-	-	-	-	-
59	12.3	-	-	7.0	-	-
65	12.1	-	-	7.0	-	-
72	11.9	10.3	10.1	6.8	-	-
79	11.3	10.3	10.1	6.6	5.5	-
85	9.5	9.9	9.9	6.6	5.3	-
92	7.6	9.0	9.4	6.3	5.2	5.0
98	6.2	7.3	8.0	6.1	5.0	5.0
105	4.6	5.7	6.8	5.5	4.8	5.0
111	3.4	4.5	5.4	4.3	4.8	4.8
118	2.2	3.1	3.9	2.8	4.6	4.8
124	-	2.2	2.7	2.0	4.0	4.6
131	-	-	1.7	-	2.6	3.9
138	-	-	-	-	1.7	2.8
144	-	-	-	-	-	2.0

### Main boom: 181.8 ft

61,700 lb  25'1" x 17'9" 360° 85%

Radius ft	Extension					
	30.2 ft			55.9 ft		
	0°	20°	40°	0°	20°	40°
ft	1,000 lb					
46	16.0	-	-	-	-	-
52	15.2	-	-	8.1	-	-
59	14.5	-	-	7.9	-	-
65	13.7	11.6	10.8	7.5	-	-
72	12.8	11.6	10.8	7.2	5.7	-
79	11.3	11.2	10.5	7.0	5.7	-
85	9.5	10.6	10.3	6.8	5.5	5.2
92	7.6	8.7	9.6	6.6	5.5	5.2
98	6.2	7.3	8.0	6.4	5.3	5.2
105	4.6	5.7	6.6	5.5	5.0	5.0
111	3.2	4.5	5.4	4.3	5.0	5.0
118	2.2	3.1	3.9	3.1	4.8	4.8
124	-	2.0	2.7	2.0	4.0	4.8
131	-	-	1.7	-	2.6	4.0
138	-	-	-	-	1.7	2.8
144	-	-	-	-	-	2.0

### Main boom: 197.0 ft

61,700 lb  25'1" x 17'9" 360° 85%

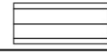
Radius ft	Extension					
	30.2 ft			55.9 ft		
	0°	20°	40°	0°	20°	40°
ft	1,000 lb					
46	-	-	-	-	-	-
52	11.2	-	-	-	-	-
59	10.8	-	-	6.6	-	-
65	10.6	-	-	6.4	-	-
72	10.3	9.4	9.7	6.3	-	-
79	10.1	9.4	9.6	6.1	4.6	-
85	9.5	9.2	9.2	6.1	4.6	-
92	7.6	8.7	9.0	5.7	4.6	4.8
98	6.4	7.5	8.2	5.5	4.6	4.8
105	4.8	6.1	6.8	5.2	4.6	4.8
111	3.4	4.7	5.4	4.2	4.6	4.6
118	2.2	3.3	4.2	3.1	4.6	4.6
124	-	2.3	3.0	2.0	4.0	4.6
131	-	-	2.0	-	2.9	4.2
138	-	-	-	-	1.9	2.8
144	-	-	-	-	-	2.0

[MAIN MENU](#)

[CONTENTS](#)

**Lifting capacities main boom extension in 1,000 lb**  
Special boom extension sequence

**Main boom: 166.0 ft**



**25'1" x 24'7" 360°**

**85 %**

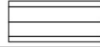
Radius	Extension					
	83,800 lb	61,700 lb	37,000 lb	83,800 lb	61,700 lb	37,000 lb
	30.2 ft			55.9 ft		
	0°					
ft	1,000 lb					
46	14.5	14.5	14.5	-	-	-
52	14.5	14.5	14.5	6.6	6.6	6.6
59	13.6	13.6	13.6	6.6	6.6	6.6
65	12.8	12.8	12.8	6.6	6.6	6.6
72	12.1	12.1	12.1	6.3	6.3	6.3
79	11.4	11.4	11.4	6.1	6.1	6.1
85	10.6	10.6	10.6	6.1	6.1	6.1
92	9.9	9.9	9.9	5.7	5.7	5.7
98	9.5	9.5	9.0	5.5	5.5	5.5
105	9.0	9.0	7.4	5.2	5.2	5.2
111	8.4	8.4	6.2	5.0	5.0	5.0
118	7.9	7.9	4.8	5.0	5.0	5.0
124	7.5	7.5	4.0	4.8	4.8	4.6
131	7.0	7.0	2.9	4.6	4.6	3.5
138	6.6	6.1	1.9	4.4	4.4	2.6
144	6.4	5.1	-	4.4	4.4	2.0
151	6.1	4.1	-	4.1	4.1	-
157	5.5	3.3	-	3.9	3.9	-
164	5.2	2.6	-	3.5	3.3	-
170	5.0	2.0	-	3.3	2.7	-
177	4.4	-	-	3.0	2.2	-
184	-	-	-	2.8	-	-
190	-	-	-	2.6	-	-
197	-	-	-	2.1	-	-
203	-	-	-	1.9	-	-

[MAIN MENU](#)

[CONTENTS](#)

**Lifting capacities main boom extension in 1,000 lb**  
Special boom extension sequence

Main boom: 166.0 ft



25'1" x 17'9" 360°

85%

Extension						
Radius	83,800 lb	61,700 lb	37,000 lb	83,800 lb	61,700 lb	37,000 lb
		30.2 ft			55.9 ft	
0°						
ft	1,000 lb					
46	14.5	14.5	-	-	-	-
52	14.5	14.5	-	6.6	6.6	-
59	13.6	13.6	-	6.6	6.6	-
65	12.8	12.8	-	6.6	6.6	-
72	12.1	12.1	-	6.3	6.3	-
79	11.4	11.4	-	6.1	6.1	-
85	10.6	10.6	-	6.1	6.1	-
92	9.9	9.6	-	5.7	5.7	-
98	9.5	8.2	-	5.5	5.5	-
105	9.0	6.8	-	5.2	5.2	-
111	8.4	5.8	-	5.0	5.0	-
118	7.9	4.6	-	5.0	5.0	-
124	6.9	3.6	-	4.8	4.4	-
131	5.7	2.6	-	4.6	3.3	-
138	4.8	-	-	4.4	2.6	-
144	4.2	-	-	4.4	-	-
151	3.0	-	-	3.9	-	-
157	2.4	-	-	3.1	-	-
164	-	-	-	2.6	-	-

[MAIN MENU](#)

[CONTENTS](#)

## Technical description

### Carrier

<b>Drive/steering</b>	10 x 6 x 8
<b>Frame</b>	Monobox main frame with outrigger boxes integral, of high-strength fine grain structural steel.
<b>Outriggers</b>	Four hydraulically telescoping outrigger beams with hydraulic jack legs.
<b>Engine</b>	Mercedes Benz OM 442 LA water-cooled 8-cylinder engine (EURO I), output to DIN: 370 kW (503 hp) at 2100 1/min max. torque 2020 Nm at 1100-1600 1/min. Fuel tank capacity: 500 l.
<b>Transmission</b>	ZF Transmatik system (14 ranges), transfer case with longitudinal differential lockout control.
<b>Axles</b>	Axle 1: steering; axle 2: with planetary hubs, steering, transverse differential lockout control; axle 3: rigid axle, non-steer; axle 4: with planetary hubs, steering, longitudinal and transverse differential lockout control; axle 5: with planetary hubs, steering, transverse differential lockout control.
<b>Suspension</b>	Hydropneumatic suspension, all axles hydraulically blockable.
<b>Wheels and tyres</b>	10 wheels fitted with 14.00 R 25 tyres, single wheels on all axles.
<b>Steering</b>	ZF dual-circuit semiblock mechanical steering with hydraulic booster.
<b>Brakes</b>	Service brake: dual-line air system. Parking brake: spring-loaded type, on 2nd, 4th and 5th axles. Sustained action brake: constant decompression with butterfly valve, exhaust brake and hydraulic retarder.
<b>Electrical equipment</b>	24 V system.
<b>Driver's cab</b>	Rubber-mounted all steel driver's cab with safety glazing, slide-by side windows, controls and instrumentation, driver's and mate's seat, vertically adjustable steering wheel, heated outside mirrors, rotafare warning light.

### Superstructure

<b>Engine</b>	Mercedes Benz OM 366 A water-cooled 6-cylinder in-line engine (EURO I), output 112 kW (153 hp) at 2200 1/min, max. torque 540 Nm at 1400 1/min, fuel tank capacity: 200 l.
<b>Hydraulic system</b>	1 variable displacement axial piston pump to provide 4 simultaneous, independent working movements and separate pump for slew unit.
<b>Hoist</b>	Fixed displacement axial piston hydraulic motor, hoist drum with integral planetary gear reducer and spring-applied multi-disk. Drum rotation indicator.
<b>Slew unit</b>	Hydraulic motor with planetary gear reducer, change-over from brake to free swing by control lever, spring-applied holding brake.
<b>Boom elevation</b>	1 differential cylinder with automatic lowering brake valve.
<b>Crane cab</b>	Spacious all-steel comfortable cab with sliding door and large hinged windscreen, tiltable 20°; roof window with armoured glass, full instrumentation and crane controls, working light. Hot water heater operated either self-contained or engine-dependent, with engine preheating and timer, thermostat-controlled. Windscreen washer and intermittent control type windscreen wiper.
<b>Main boom</b>	Boom base and 5 telescopic sections, fabricated from fine grain structural steel, telescoping ability with partial load, buckling-resistant Demag ovaloid design.
<b>Counterweight</b>	61,700 lb, self removable.
<b>Safety devices</b>	Electronic safe load indicator with digital readout for hook load, rated load, boom length, boom angle, load radius, analog display to indicate the capacity utilization, limit switches on hoist and lowering motions, pressure-relief and safety holding valves.
<b>Hydraulic servo control</b>	Hydro-electric pilot control through self-centering control levers.

### Optional equipment

<b>Drive/steering</b>	10 x 8 x 8
<b>Wheels and tyres</b>	16.00 R 25 on 1125-25 rims; 20.5 R 25 on 1700-25 rims.
<b>Tow coupling</b>	D-value 12 t or 19 t, air-brake connection.
<b>Hoist II</b>	Fixed displacement axial piston hydraulic motor, hoist drum with integral planetary gear reducer and spring-applied multi-disk brake. The use of hoist II avoids re-reeving the hoist line when using the optional jib.
<b>Main boom extension</b>	Side-folding 1 or 2-part jib, 30 ft or 56 ft. 0°, 20° and 40° offset.
<b>Additional counterweight</b>	22,000 lb, integrates into standard counterweight, installed hydraulically by the crane itself.

Subject to change without notice! · Machine operation is subject to computer charts only!

07/98

[MAIN MENU](#)

[CONTENTS](#)